

KATALOG S. 2 - 9
PROSPEKTE WELCOME S. 10-11

Enjoy reading!

embacco **lighting**[®]

THE
ONLY
OUTDOORS
YOU WILL
EVER
REALLY
NEED

THE
2 GREAT
OUTDOORS



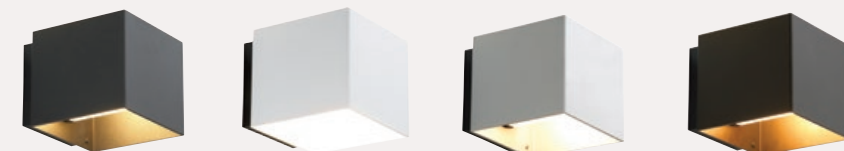


IP44
WELCOME

OUR CUBIC WALLLAMP FOR OUTDOOR.

DIMENSIONS: H 16 x W 18 x D 18 CM.
MATERIAL: 4 MM ALUMINIUM SHADE.
SURFACE: STRONG POWDER COATING.
GLASS COVER IN FROSTED GLASS.
SOCKET: MULTI E 27 - LED ENERGY SAVING
OR INCANDESCENT - YOU ARE FREE TO CHOOSE.
ACCESSORIES: NAME PLATES IN TWO SIZES.
TOP COVER FOR COVERING UPLIGHT.

Welcome



Black alu, high glossy white, alu or bronze DKK 1.276,- excl. moms/1.595 incl. moms - EUR 196,- ex VAT

WE DON'T HAVE MUCH
WE HAVE ENOUGH
WE REALLY LIKE
- SIMPLICITY -



Private residence, Denmark



LIGHT U

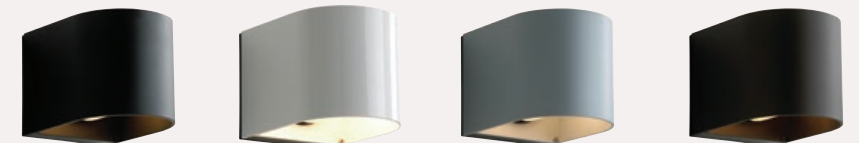
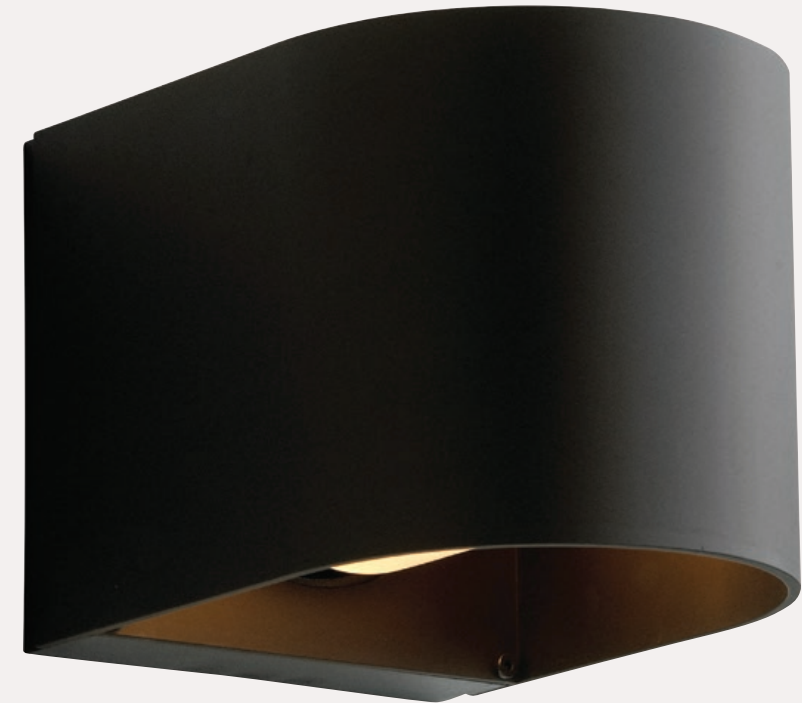
IP44

IS
OUR SOFT U-SHAPED OUTDOOR.

DIMENSIONS: H 14 x W 14,8 x D 18 CM.
MATERIAL: 4 MM ALUMINIUM SHADE.
SURFACE: STRONG POWDER COATING.
GLASS COVER IN FROSTED GLASS.
SOCKET: MULTI E 27 - LED ENERGY SAVING
OR INCANDESCENT - YOU ARE FREE TO CHOOSE.
ACCESSORIES: NAME PLATES IN TWO SIZES.
TOP COVER FOR COVERING UPLIGHT.

Light U

OUR SOFT U-SHAPED

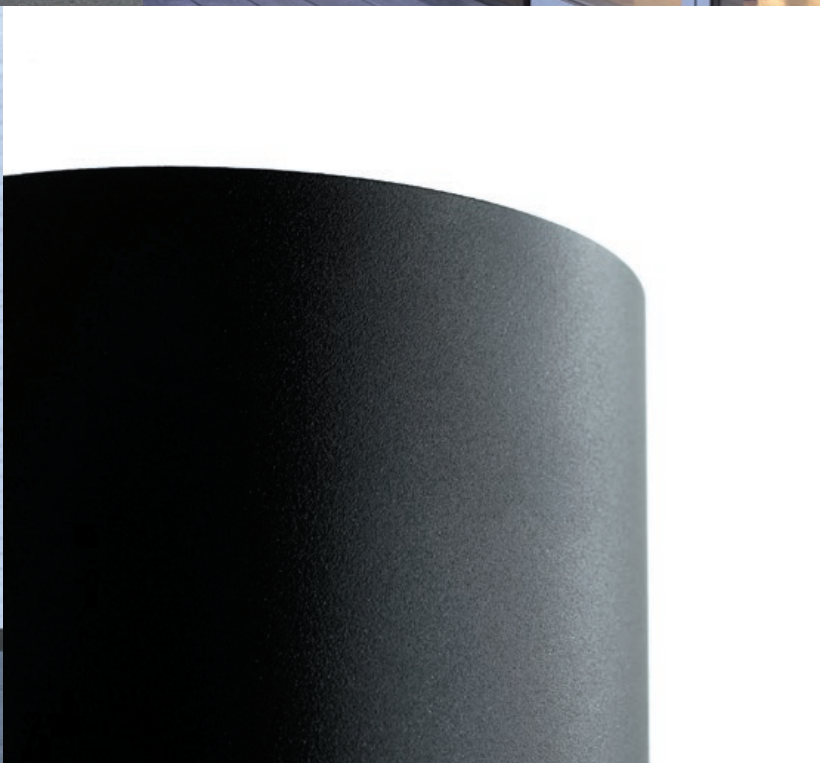


Black alu, high glossy white, alu or bronze DKK 1.276,- excl. moms/1.595 incl. moms - EUR 196,- ex VAT



Bjerget by BIG Group, Orestad CPH, DK

WELCOME AND LIGHT U ARE DESIGNED
AND MANUFACTURED IN DENMARK.
THE STYLE IS TIMELESS CLASSIC,
WHICH MAKES IT EASY TO MOUNT
THE WALL LAMPS ON MOST HOUSE
FRONTS AND SURFACES.





FAQ

WHY 2 OUTDOORS?

Because we love to keep it simple.

We believe the 2 outdoors - with their minimalistic design - is, what is needed to fulfill most needs in outdoor fixtures.

IS IT POSSIBLE TO GET A LED VERSION?

Yes... and even more importantly – you can replace the LED bulb yourself, if needed.

ARE THE OUTDOORS PROTECTED AGAINST WEATHER IMPACTS?

Yes - with triple protection.

The shades are made of sea-water resistant alu.

Next it is chromatised and finally we powder-coat with a strong powder for outdoor use.

WHAT MAKES THE WELCOME SO SPECIAL?

Besides the size and quality, the designer has refined and rounded the edges of the shade, which gives a soft and human look.

Finally, the multi E27 socket, guarantees the outdoors to be fit for future changes on the LED-market.

ARE THEY EASY TO INSTALL?

Yes.

All mounting parts are included in the box, where you also find a drilling template.

THE
ONLY
OUTDOORS
YOU WILL
EVER
REALLY
NEED

EMBACCO LIGHTING - founded back in 1994 - is a danish lighting company.
We have been working in lighting design since the very beginning.
The founder Lise Nørgaard is still today running the company.
In 2008 we launched our own lighting collection and the great outdoors.

Please note...

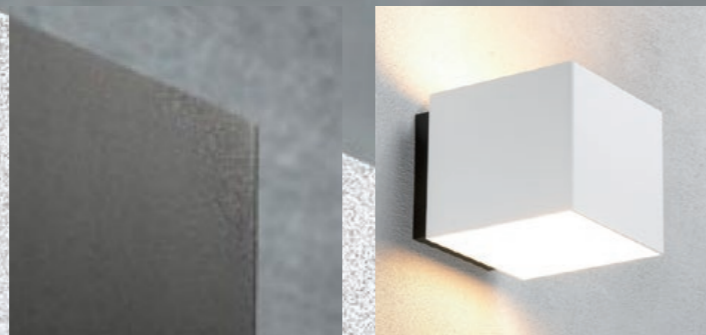
Welcome and Light U are separated from the electrical part,
meaning it is easy to refresh the shade with a new layer of paint.

Og så er de 2 udendørs danske...naturligvis.

embacco **lighting**[®]

EMBACCO LIGHTING APS
DK-4700 NÆSTVED, DENMARK
TEL.+45 7022 8025
INFO@EMBACCO.DK
WWW.EMBACCO.DK

Welcome
IP44

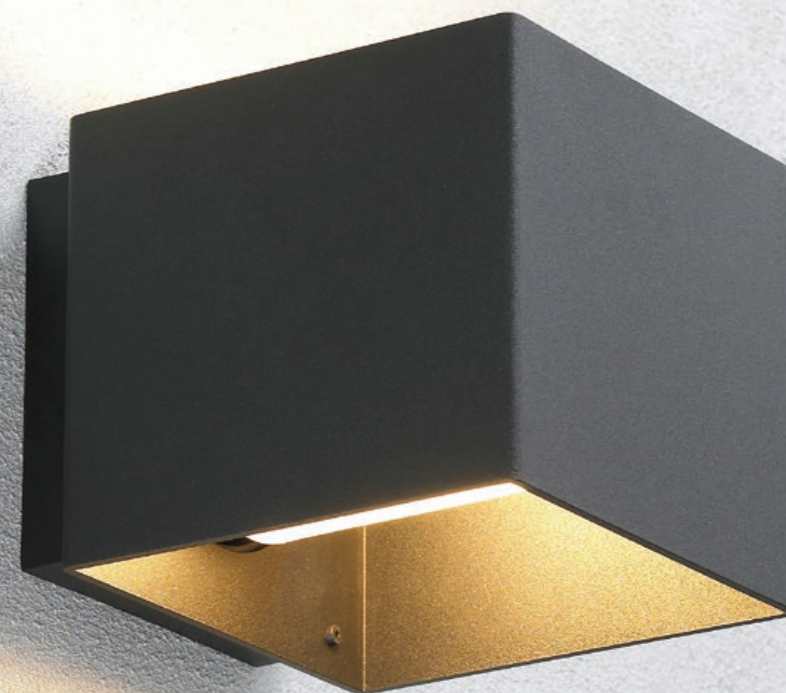


Welcome

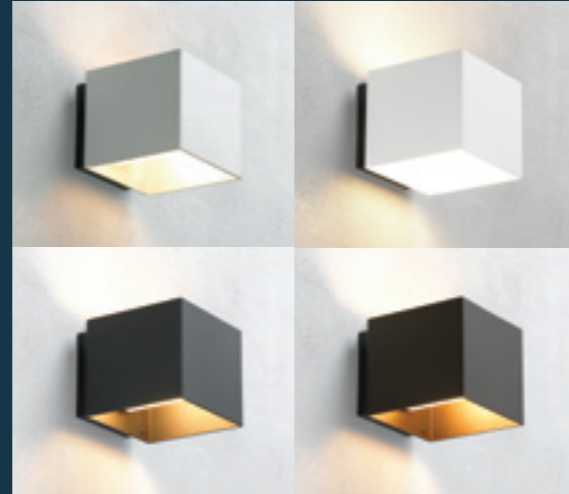
embaccolighting®

Embacco Lighting
Maglemølle 93
DK-4700 Næstved
+45 7022 8025

info@embacco.dk
www.embacco.dk



Welcome

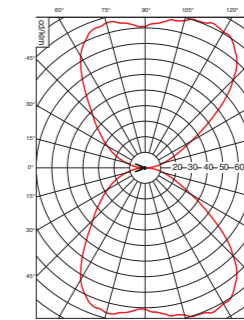
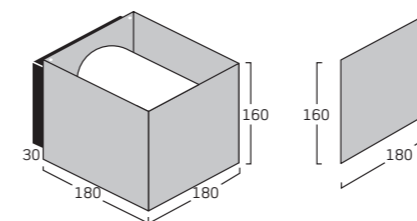


Technische Spezifikationen

- Welcome:** Außen-Wandleuchte up/down
- Design:** Embacco design
- Material:** 4 mm Aluminiums-Gehäuse
- Oberfläche:** Glasgestrahlt eloxiert oder pulverlackiert.
- Anbaudose:** ASA – schwarz.
Glasabdeckung in satiniertem Glas.
- Anbau:** An Wand oder Wanddose.
- Anschluss:** Doppeleinführung
2 x 1,5 mm² Kabel in 3 x 4 mm² Klemme. Beidseitiger Anschluss ist möglich.
Reihenschaltung im Beleuchtungskörper möglich.
- Schutzart:** IP 44*, Klasse. I
- Bestückung:** Standard Glühbirne E 27, max 60 W
Energiesparlampe – E 27, max 15/20 W
Keine Halogenlampen
- Gewicht:** 1,8 kg
- Zubehör:** Namensschilder in zwei Größen.

Produktvarianten

Welcome Wandleuchte	Alu natur	1 x E 27	77027
Welcome Wandleuchte	Bronze elox.	1 x E 27	77127
Welcome Wandleuchte	Schwarz	1 x E 27	77227
Welcome Wandleuchte	Weiß, Hochglanz	1 x E 27	77327
Topplatte zur Abdeckung des Uplight = 77xxx+T			
Welcome Schild	80 x 180 mm	Alu natur	77080
Welcome Schild	160 x 180 mm	Alu natur	77090
Welcome Schild	80 x 180 mm	Schwarz	77280
Welcome Schild	160 x 180 mm	Schwarz	77290
Welcome Schild	80 x 180 mm	Weiß, Hoch	77380
Welcome Schild	160 x 180 mm	Weiß, glanz	77390



$\eta_{LB} = 61\%$

