

CATALOGUE P. 2 - 9  
PRODUCTSHEET WELCOME P. 10-11

Enjoy reading!

embacco **lighting**<sup>®</sup>



THE  
ONLY  
OUTDOORS  
YOU WILL  
EVER  
REALLY  
NEED

THE  
2 GREAT  
OUTDOORS





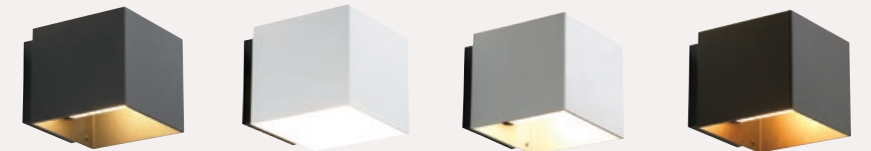


IP44  
**WELCOME**

OUR CUBIC WALLLAMP FOR OUTDOOR.

DIMENSIONS: H 16 x W 18 x D 18 CM.  
MATERIAL: 4 MM ALUMINIUM SHADE.  
SURFACE: STRONG POWDER COATING.  
GLASS COVER IN FROSTED GLASS.  
SOCKET: MULTI E 27 - LED ENERGY SAVING  
OR INCANDESCENT - YOU ARE FREE TO CHOOSE.  
ACCESSORIES: NAME PLATES IN TWO SIZES.  
TOP COVER FOR COVERING UPLIGHT.

# Welcome



Black alu, high glossy white, alu or bronze DKK 1.276,- excl. moms/1.595 incl. moms - EUR 196,- ex VAT

WE DON'T HAVE MUCH  
WE HAVE ENOUGH  
WE REALLY LIKE  
- SIMPLICITY -



Private residence, Denmark



# LIGHT U

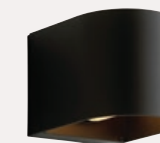
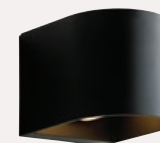
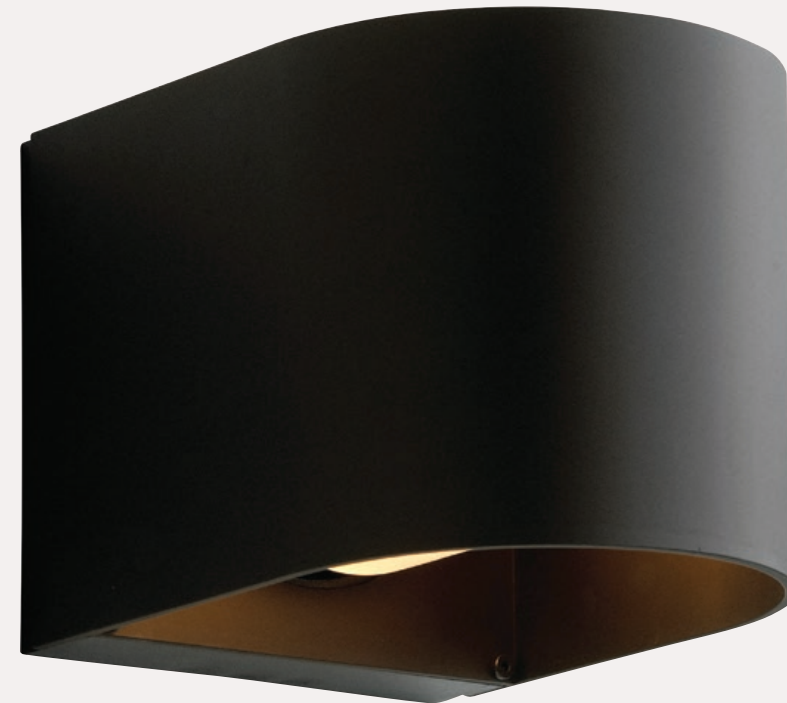
IP44

IS  
OUR SOFT U-SHAPED OUTDOOR.

DIMENSIONS: H 14 x W 14,8 x D 18 CM.  
MATERIAL: 4 MM ALUMINIUM SHADE.  
SURFACE: STRONG POWDER COATING.  
GLASS COVER IN FROSTED GLASS.  
SOCKET: MULTI E 27 - LED ENERGY SAVING  
OR INCANDESCENT - YOU ARE FREE TO CHOOSE.  
ACCESSORIES: NAME PLATES IN TWO SIZES.  
TOP COVER FOR COVERING UPLIGHT.

## Light U

OUR SOFT U-SHAPED



Black alu, high glossy white, alu or bronze DKK 1.276,- excl. moms/1.595 incl. moms - EUR 196,- ex VAT

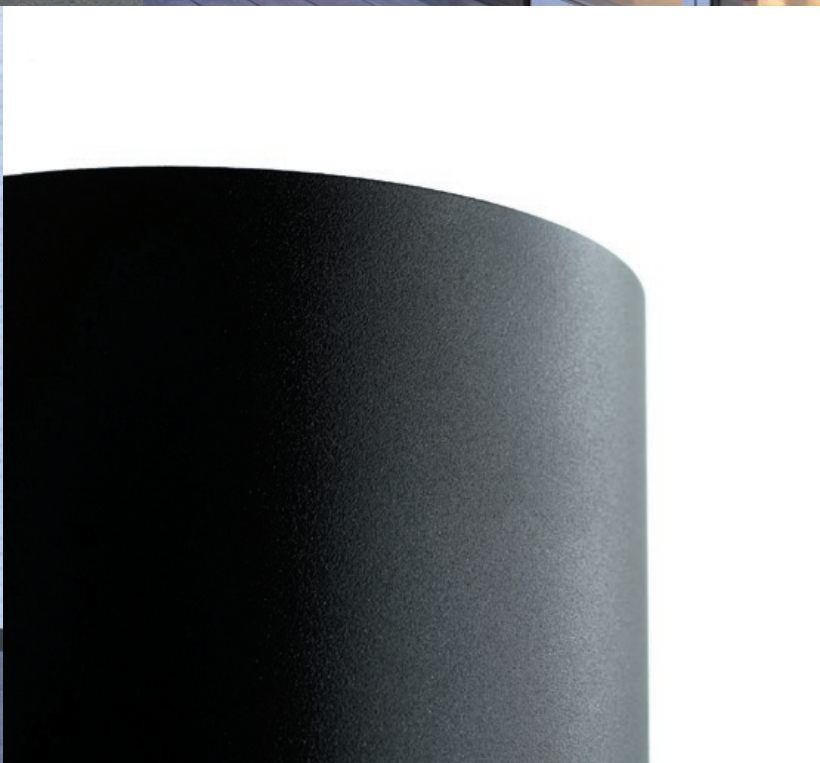




Bjerget by BIG Group, Orestad CPH, DK



WELCOME AND LIGHT U ARE DESIGNED  
AND MANUFACTURED IN DENMARK.  
THE STYLE IS TIMELESS CLASSIC,  
WHICH MAKES IT EASY TO MOUNT  
THE WALL LAMPS ON MOST HOUSE  
FRONTS AND SURFACES.







# FAQ

## **WHY 2 OUTDOORS?**

Because we love to keep it simple.  
We believe the 2 outdoors - with their minimalistic design - is, what is needed to fulfill most needs in outdoor fixtures.

## **IS IT POSSIBLE TO GET A LED VERSION?**

Yes... and even more importantly – you can replace the LED bulb yourself, if needed.

## **ARE THE OUTDOORS PROTECTED AGAINST WEATHER IMPACTS?**

Yes - with triple protection.  
The shades are made of sea-water resistant alu.  
Next it is chromatised and finally we powder-coat with a strong powder for outdoor use.

## **WHAT MAKES THE WELCOME SO SPECIAL?**

Besides the size and quality, the designer has refined and rounded the edges of the shade, which gives a soft and human look.  
Finally, the multi E27 socket, guarantees the outdoors to be fit for future changes on the LED-market.

## **ARE THEY EASY TO INSTALL?**

Yes.  
All mounting parts are included in the box, where you also find a drilling template.



THE  
**ONLY**  
OUTDOORS  
YOU WILL  
EVER  
**REALLY**  
NEED

**EMBACCO LIGHTING** - founded back in 1994 - is a danish lighting company.  
We have been working in lighting design since the very beginning.  
The founder Lise Nørgaard is still today running the company.  
In 2008 we launched our own lighting collection and the great outdoors.

**Please note...**

Welcome and Light U are separated from the electrical part,  
meaning it is easy to refresh the shade with a new layer of paint.

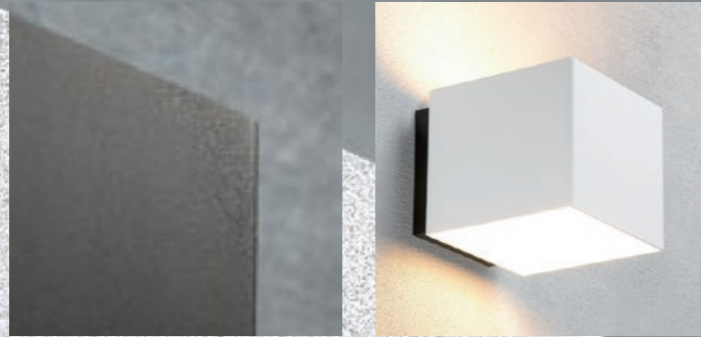
Og så er de 2 udendørs danske...naturligvis.

embacco **lighting**<sup>®</sup>

EMBACCO LIGHTING APS  
DK-4700 NÆSTVED, DENMARK  
TEL.+45 7022 8025  
INFO@EMBACCO.DK  
WWW.EMBACCO.DK



Welcome  
IP44

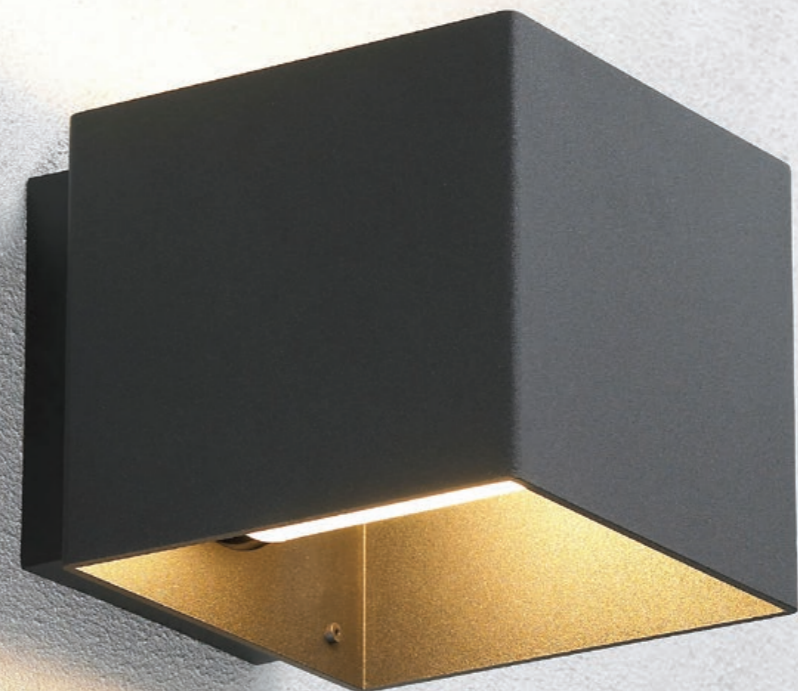


Welcome

embaccolighting®

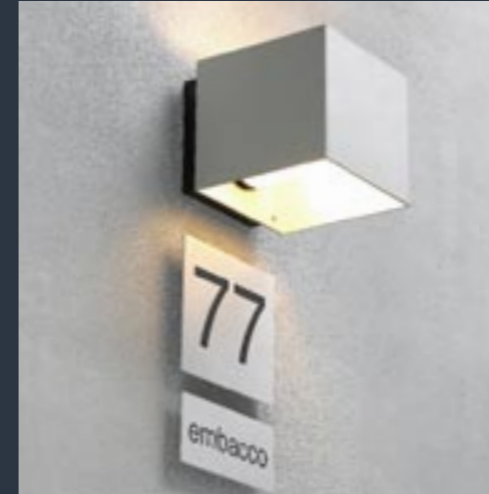
Embacco Lighting  
Maglemølle 93  
DK-4700 Næstved  
+45 7022 8025

info@embacco.dk  
www.embacco.dk





# Welcome

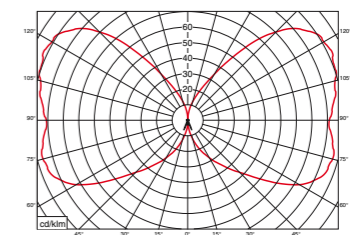
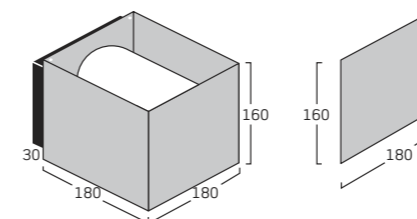


## Technical characteristics

- Welcome:** Exterior up- /downlight luminaire for wall installation.
- Design:** Embacco design
- Material:** 4 mm aluminium shade.  
For exterior as well as interior use.
- Surface:** Glass blown anodization or powder coated surface.
- Rear Box:** ABS/PC in black colour.  
Glass cover in frosted glass.
- Mounting:** On wall or wall box.
- Connection:** Double cable entry for 2 x 1,5 mm<sup>2</sup> cable; 3 pole, 4 mm<sup>2</sup> terminal block
- Classification:** IP 44 kl. I
- Light source:** E 27 – max 75 W incandescent  
E 27 – 15 /20 W energy saving no halogen
- Weight:** 1,8 kg
- Fitting:** Name plates in two sizes  
Top cover for covering uplight

## Product variants

Welcome wall	alu nature	1 x E 27	77027
Welcome wall	bronze elox.	1 x E 27	77127
Welcome wall	black	1 x E 27	77227
Welcome wall	white shiny	1 x E 27	77327
Welcome sign plate	80 x 180 mm	alu nature	77080
Welcome sign plate	160 x 180 mm	alu nature	77090
Welcome sign plate	80 x 180 mm	bronze	77180
Welcome sign plate	160 x 180 mm	bronze	77190
Welcome sign plate	80 x 180 mm	black	77280
Welcome sign plate	160 x 180 mm	black	77290
Welcome sign plate	80 x 180 mm	white shiny	77380
Welcome sign plate	160 x 180 mm	white shiny	77390
Welcome top cover		alu nature	77037
Welcome top cover		bronze	77137
Welcome top cover		black	77147
Welcome top cover		white shiny	77157



$\eta_{LB} = 61\%$

